



## NATIONAL POWER CORPORATION

SUPPLEMENTAL /BID BULLETIN NO. \_\_\_  
to the Bid Documents for the:

**SUPPLY AND DELIVERY OF CONSOLIDATED VARIOUS SPARE PARTS FOR  
CUMMINS DIESEL ENGINE MODEL NO. 6LTAA8.9-G2-G3 UNDER PR NOS.: S1-  
CON23-001 AND S1-MRO23-002/ REF NO. PB230327-JD00051**

**22 MARCH 2023**

All prospective bidders and authorized copyholders of the Bid Documents of the above-mentioned project are hereby informed of the changes as follows:

### A. BID SUBMISSION/OPENING

<b>27 March 2023 9:30 A.M. Kaňao Function Room</b>	<b>31 March 2023 9:30 A.M. Kaňao Function Room</b>
--	--

### B. ADDITIONAL INFORMATION FOR ITEM Nos. 3, 4, and 5

**SEE ATTACHED "ANNEX A - H"**

All other terms and conditions shall remain the same.

For the information and guidance of all authorized copyholders of the Bid Documents and prospective bidders.

For the Bids and Awards Committee:

  
**RENE D. BARRUELA**  
Vice President, Corporate Affairs Group and  
Chairman, Bids and Awards Committee



Schneider  
Electric

Compact

NSX630H

U <sub>i</sub> 600 V	U <sub>imp</sub> 8kV		
U <sub>e</sub> (V)	I <sub>cu</sub> (kA)	I <sub>cs</sub>	
240	~	100	100
415	~	70	70
440	~	65	65
500	~	50	50
525	~	35	11
690	~	20	10

50/60Hz cat A

IEC 60947-2

NEMA AB1	HIC (kA)		
240V	~	100	
480V	~	65	
600V	~	35	

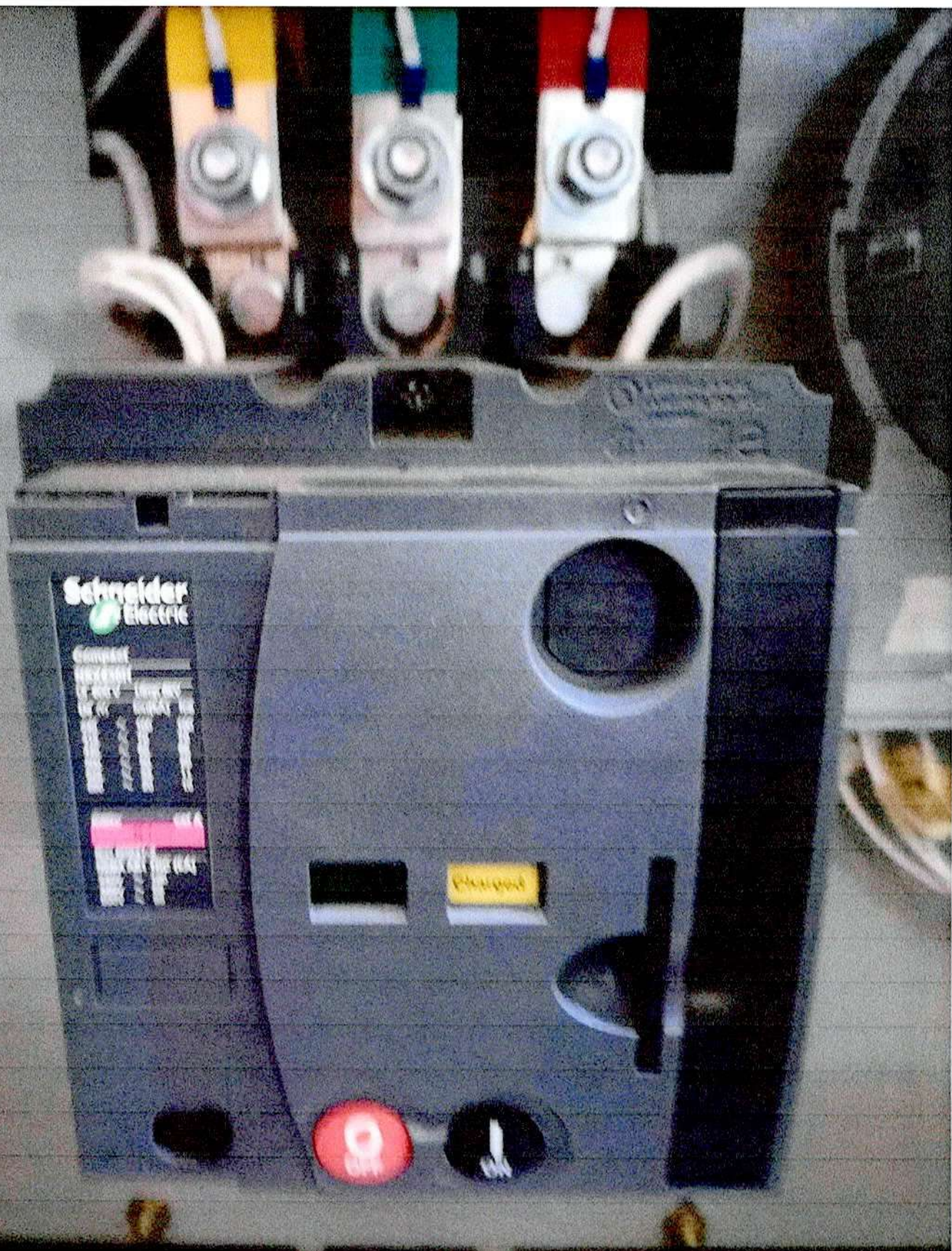
OFF

Charged

OFF

ON

"Annex B"



Circuit Breaker 200kW  
Cummins

2023.02.23 14:23

"Annex C"

2004244934 2850 1/1  
NSX400F MT 220V Mic2.3 400A 3P3D  
LV432676MT1

Made in China  
中國製造



TC204430001



LISTED MAN. MTR. CNTLR  
34XL

# NSX 400-630 F/N/H/NA

Equipped with TMD/DE or Micrologic trip unit  
This MMC is suitable for use on a circuit capable of sustaining  
no more than the short-circuit current rating of the unit  
indicated here below.

SC current rating kA 50/60 Hz

Vac	NSX400			NSX630		
	F	N	H	F	N	H
240	85	85	85	85	85	85
480	35	50	65	35	50	65
600	20	20	20	20	20	20

Rated current: see Micrologic trip unit for HP rating  
tripping current 125%  
Suitable as motor disconnect

Temperature rating 75°C wire size	tightening torque		Terminal kit reference	
	lb-inch	Nm	3P	4P
2AWG to 600kcmil Cu 2AWG to 500kcmil Al	274	31	LV432479	LV432480
2x2/0 AWG to 500kcmil	274	31	LV432481	LV432482

# item no. 3 nameplate

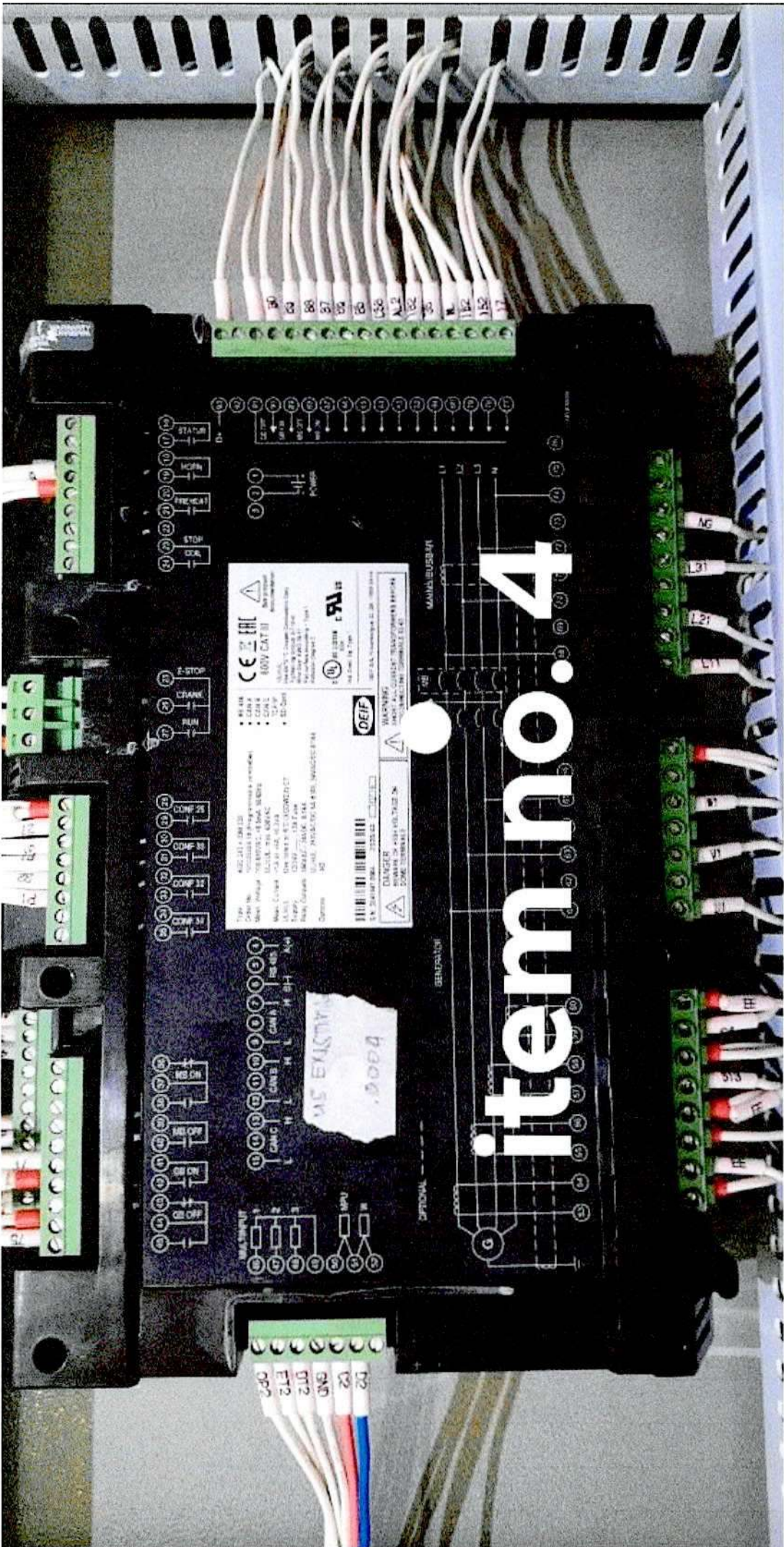


2023.02.23 14:22

DEIF AGC 200

"Amex D"

"Annex E"



Type AGC 243 + IOM 230  
 Order No. 101009508.10 (Programmable controller)  
 Meas. Voltage 100-690VAC, <0.5mA, 50/60Hz  
 UL/cUL: max. 600VAC  
 Meas. Current -/1A or -/5A, <0.3VA  
 UL/cUL Use listed or R/C (XODW2.8) CT  
 Supply 12/24V     , 12A Fuse  
 Relay Outputs 250VAC / 24VDC, 8/16A  
 UL/cUL: 250VAC/DC 6A B300, 24VAC/DC 8/16A  
 Options -H2

- RS 485
- CAN A
- CAN B
- CAN C
- TCP/IP
- SD Card

CE  EAC  
 600V CAT III



See product documentation

UL/cUL:  
 Use 60/75 °C Copper Conductors Only  
 Tightening torque: 5-7 lb-in.  
 Wire Size: AWG 30-12  
 Flat surface mounting - Type 1  
 Pollution Degree 2

 US LISTED  
 2EDA

 US

Ind. Cont. Eq. Type 1



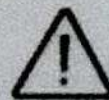
S/N: 2041947.0004 2020/43



DEIF A/S, Frisenborgvej 33, DK - 7800 Skive



**DANGER**  
 BEWARE OF HIGH VOLTAGE ON  
 SOME TERMINALS



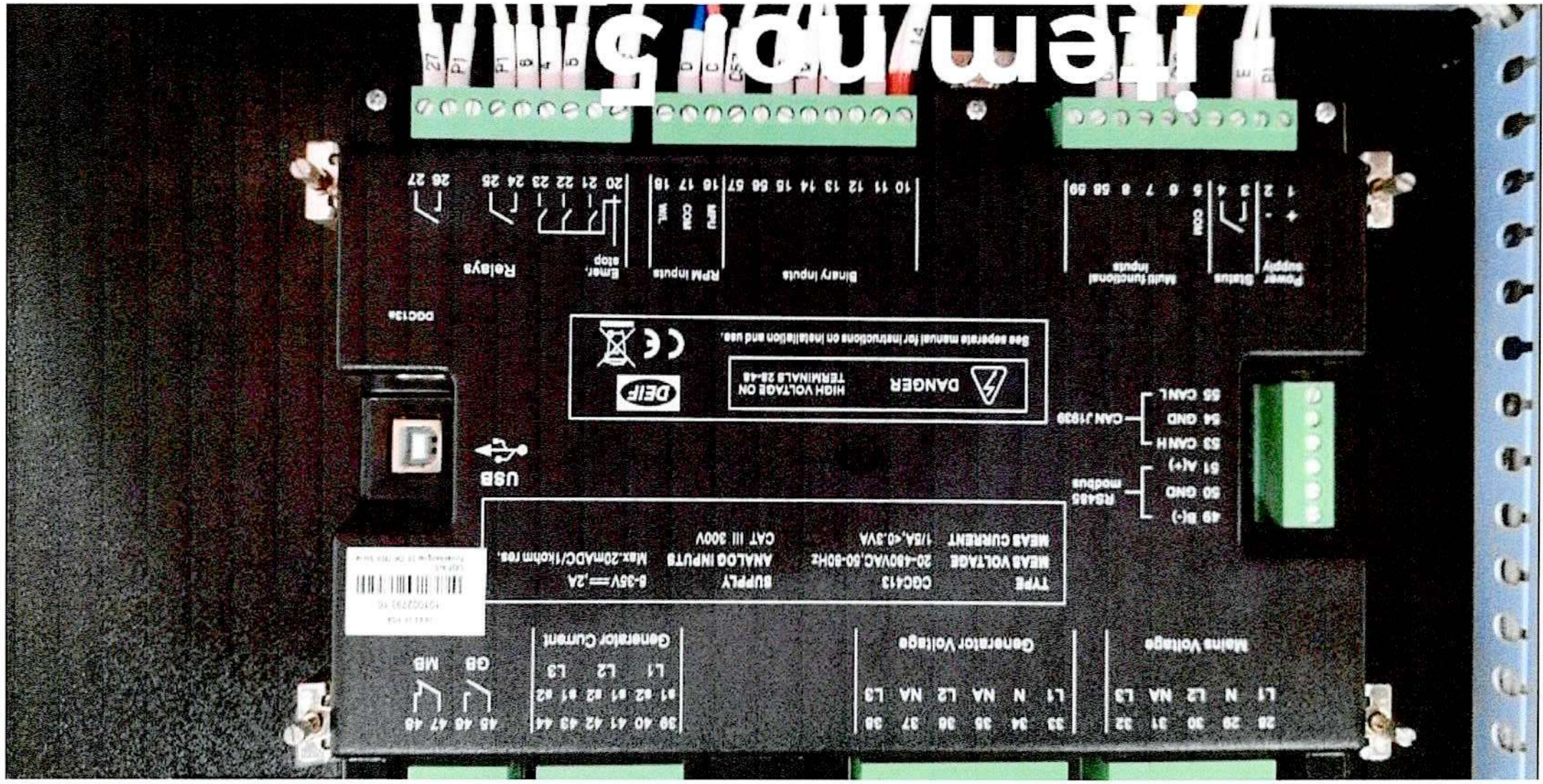
**WARNING**  
 SHORT ALL CURRENT TRANSFORMERS BEFORE  
 DISCONNECTING TERMINALS 63-60

item no. 4

MAINS BUSBAR

Annex F

"Annex 6"



15002793 16  
 15002793 16  
 15002793 16

TYPE CQC113  
 MEAS VOLTAGE 20-480VAC, 50-50Hz  
 MEAS CURRENT 1/5A, <0.3VA  
 SUPPLY 0-35V = 2A  
 ANALOG INPUTS Max: 20mADC/1kohm res.  
 CAT III 300V

Mains Voltage  
 L1 N L2 NA L3  
 28 29 30 31 32

Generator Voltage  
 L1 N NA L2 NA L3  
 33 34 35 36 37 38

Generator Current  
 L1 L2 L3  
 39 40 41 42 43 44

45 46 47 48  
 GB MB

49 B(-)  
 50 GND  
 51 A(+)  
 53 CANH  
 54 GND  
 55 CANL  
 CAN J1939  
 RS485 module

See separate manual for instructions on installation and use.  
 HIGH VOLTAGE ON TERMINALS 28-48  
 DANGER  
 DEIF

Power supply  
 1 2  
 + -  
 Status  
 3 4  
 COM  
 Multi functional inputs  
 5 6 7 8 58 59

Binary Inputs  
 10 11 12 13 14 15 58 57  
 16 17 18  
 INT COM INT

RPM Inputs  
 19 20 21 22 23 24 25  
 Emer. stop

Relays  
 26 27

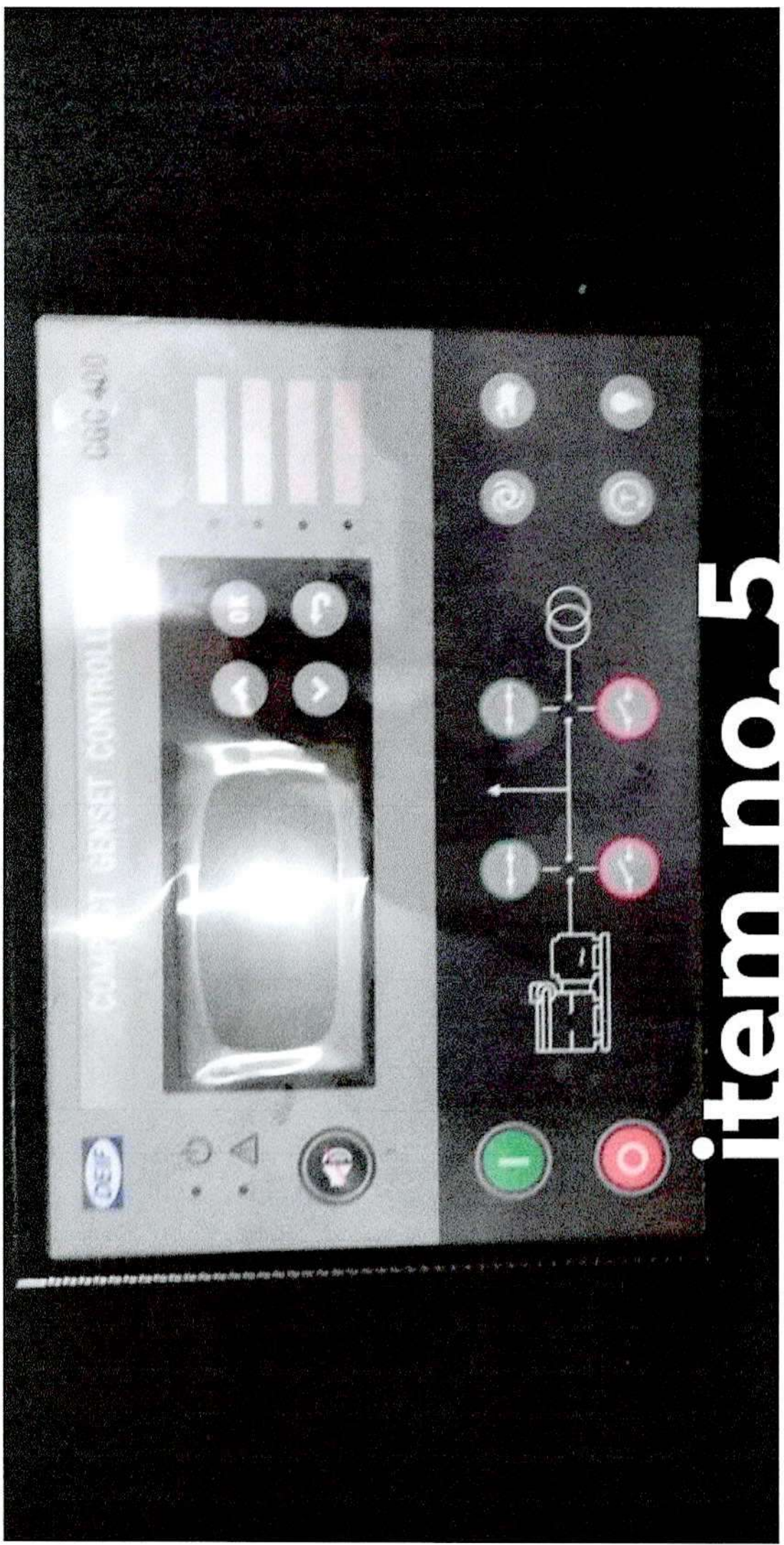
DOC13a

USB



Terminal 5





item no. 5